

Duct Point Sensor Mounting Flange Kit

Product Description

Duct Point Temperature Sensor Mounting Flange Kit.

Product Number

AQM2000

Required Tools

- Drill with 13/32-inch (10.3 mm) bit and No. 27 bit
- Power screwdriver with standard screw chuck or medium flat-blade screwdriver
- Wire cutter/stripper
- Three No. 10 sheet metal screws

Expected Installation Time

20 minutes

Prerequisites

- Review the instructions before beginning.
- Duct point sensor to be mounted must be installed and wired near the mounting site with enough flexible conduit to allow for insertion into the flange after it is mounted to the ductwork.

Installation

1. Drill a 13/32-inch (10.3 mm) hole into the duct at the desired location of the sensor. See Figure 1.
2. Using the duct mounting flange as a template, drill three holes with a No. 27 bit for the sheet metal screws.

3. Place the neoprene gasket against the duct, and align the three small holes in the duct with the holes in the gasket and duct mounting flange.

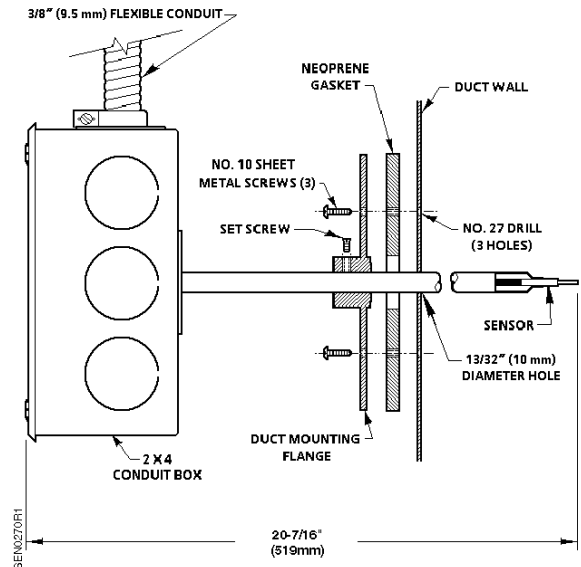


Figure 1. Duct Point Sensor Installation.

4. Use the three No. 10 sheet metal screws to fasten the gasket and duct mounting flange to the duct.
5. Loosen the set screws in the hub of the duct mounting flange and insert the sensor through the flange into the duct.

NOTE: The sensor tip should protrude into the duct about 1/4 or 3/4 of the duct's diameter. These are the points of average airflow and average air temperature. The air velocity is high enough that the sensor response time is not a problem.

6. Tighten the set screw.

The installation is now complete.

Information in this publication is based on current specifications. The company reserves the right to make changes in specifications and models as design improvements are introduced. Other product or company names mentioned herein may be the trademarks of their respective owners. © 2009 Siemens Industry, Inc.