

Continuous Hinge Enclosures

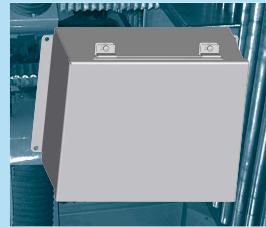
Application -
Designed for use as electrical junction boxes, terminal wiring boxes, instrument housings, and electrical control enclosures. Provides protection from dust, dirt, oil and water. For installation information, consult our Installation Manual at www.saginawcontrol.com.

Construction -

- 0.063" carbon steel.
- Seams continuously welded and ground smooth, no holes or knockouts.
- Continuous hinge with stainless steel pin.
- Stainless steel external screw clamps are quick and easy to operate.
- Oil resistant gasket.
- Standoffs provided for mounting optional sub-panels.
- Ground Stud on door and body.

Finish -
ANSI-61 gray powder coated inside and out. Optional sub-panels are powder coated white.

IS2 - Industry Standards -
NEMA Type 4, 12 & Type 13
UL Listed, Type 4 & 12
CSA Type 4 & 12
IEC 60529 IP66



CONTINUOUS HINGE ENCLOSURES

Catalog No.	ENCLOSURE PRODUCT CODE A1				List Price	Catalog No.	SUB-PANEL (P3)		List Price
	Height (A)	Width (B)	Depth (C)	Industry Standard			Panel Height (D)	Panel Width (E)	
SCE-404CHNF	4.00	4.00	3.00	IS2	37.68	No Panel	N/A	N/A	
SCE-404CHNF	4.00	4.00	4.00	IS2	38.97	No Panel	N/A	N/A	
SCE-604CHNF	6.00	4.00	3.00	IS2	42.36	SCE-6P4	4.88	2.88	3.01
SCE-604CHNF	6.00	4.00	4.00	IS2	45.48	SCE-6P4	4.88	2.88	3.01
SCE-606CHNF	6.00	6.00	4.00	IS2	49.37	SCE-6P6	4.88	4.88	3.61
SCE-806CHNF	8.00	6.00	3.50	IS2	53.27	SCE-8P6	6.75	4.88	4.17
SCE-806CHNF	8.00	6.00	6.00	IS2	62.66	SCE-8P6	6.75	4.88	4.17
SCE-808CHNF	8.00	8.00	4.00	IS2	59.78	SCE-8P8	6.75	6.88	4.89
SCE-808CHNF	8.00	8.00	6.00	IS2	66.69	SCE-8P8	6.75	6.88	4.89
SCE-1008CHNF	10.00	8.00	4.00	IS2	69.39	SCE-10P8	8.75	6.88	5.70
SCE-1008CHNF	10.00	8.00	6.00	IS2	73.30	SCE-10P8	8.75	6.88	5.70
SCE-1008CHNF	10.00	10.00	6.00	IS2	80.55	SCE-10P10	8.75	8.88	6.73
SCE-1206CHNF	12.00	6.00	4.00	IS2	63.66	SCE-12P6	10.75	4.88	5.35
SCE-1210CHNF	12.00	10.00	5.00	IS2	87.29	SCE-12P10	10.75	8.88	7.72
SCE-1210CHNF	12.00	10.00	6.00	IS2	89.33	SCE-12P10	10.75	8.88	7.72
SCE-1210CHNF	12.00	10.00	8.00	IS2	91.96	SCE-12P10	10.75	8.88	7.72
SCE-1210CHNF	12.00	10.00	8.00	IS2	98.74	SCE-12P10	10.75	8.88	7.72
SCE-1412CHNF	14.00	12.00	6.00	IS2	101.32	SCE-12P12	10.75	10.88	9.08
SCE-1408CHNF	14.00	8.00	6.00	IS2	87.06	SCE-14P8	12.75	6.88	7.39
SCE-1412CHNF	14.00	12.00	6.00	IS2	112.50	SCE-14P12	12.75	10.88	10.13
SCE-1412CHNF	14.00	12.00	6.00	IS2	118.13	SCE-14P12	12.75	10.88	10.13
SCE-1412CHNF	14.00	12.00	8.00	IS2	119.01	SCE-14P12	12.75	10.88	10.13
SCE-1610CHNF	16.00	10.00	6.00	IS2	102.65	SCE-16P10	14.75	8.88	9.90
SCE-1614CHNF	16.00	14.00	6.00	IS2	131.71	SCE-16P14	14.75	12.88	13.95
SCE-1614CHNF	16.00	14.00	6.00	IS2	138.30	SCE-16P14	14.75	12.88	13.95
SCE-1614CHNF	16.00	14.00	8.00	IS2	143.66	SCE-16P14	14.75	12.88	13.95
SCE-161410CHNF	16.00	14.00	10.00	IS2	150.70	SCE-16P14	14.75	12.88	13.95

Catalog numbers containing an "S" are hinged on the short side.

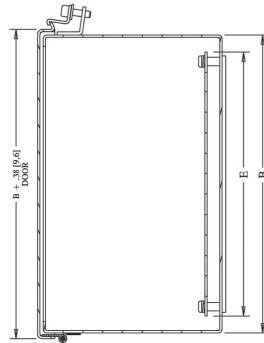
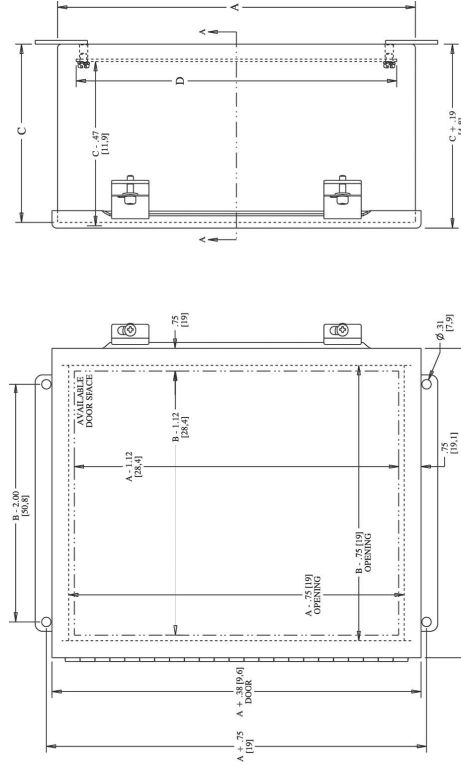


Phone (989) 799-6874
Fax (989) 799-4524



Your Enclosure Source

CONTINUOUS HINGE ENCLOSURES TECHNICAL DATA



SECTION A-A

NOTE:
Sub-panel must be ordered separately
CLAMPING NOTE:
Enclosures < 10.00 [254] in height require one clamp centered vertically on door.

Phone (989) 799-6874
Fax (989) 799-4524



Your Enclosure Source