

GENERAL ACCESSORIES

Disconnect Adapter Kit

Designed to convert a SCE - (U) style enclosure to a (V) style. Will accept the following: Allen-Bradley 149AV; Cutler-Hammer C361C371; General Electric Type TDA; ITE Max-Flex FHOH; Square D Class 9422. For installation information consult our Installation Manual at www.saginawcontrol.com. Made of heavy gauge steel and powder coated ANSI-61 gray.

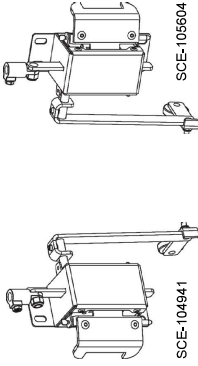


Blank Disconnect Cover Plate

Designed to cover disconnect cutouts in the flange of the enclosure and has an oil-resistant gasket to seal against oil, dust, dirt, and water. Made of heavy gauge steel and powder coated ANSI-61 gray. Stainless plate is made of Type 304 stainless with #4 brushed finish.

Mechanical Interlock

Designed for use with Envirolite® two-door enclosures to interlock the master door to the slave door.



Electrical Interlock

Designed to provide a safety lockout on an enclosure when the circuits are energized. UL recognized. Works with SCE hardware. For installation information, consult our Installation Manual at www.saginawcontrol.com.

Electrical Interlock Defeater

Designed to provide a key operated momentary contact switch with the contacts normally closed. Turning the key disengages the circuit to the electrical interlock, allowing access to the enclosure. May be used with SCE-E1151 Electrical Interlock. 4 amp, 125 vac.



Catalog No.	Description	Product Code	List Price
SCE-U4400V	'U' Style to 400 Amp Style	P2	47.19
SCE-U4V	'U' Style to V Style	P2	47.19

Catalog No.	Description	Product Code	List Price
SCE-ABDCP	Carbon Steel for Allen-Bradley F/D Cutout	P2	42.22
SCE-DCP	Carbon Steel for Standard SCE Cutout	P2	42.22
SCE-DCPSS	Stainless Steel for Standard SCE Cutout	P2	53.40

Catalog No.	Description	Quantity Per Kit	Product Code	List Price
SCE-I04941	Interlock for Left Door as Main	1	P2	143.31
SCE-I05004	Interlock for Right Door as Main	1	P2	143.31

Catalog No.	AMPS	Hz	Volt	Product Code	List Price
SCE-E1151	.100 / .63	50/60	115	P2	144.68

Catalog No.	AMPS	Hz	Volt	Product Code	List Price
SCE-EKDF	10	60	120	P2	36.21

[Back to Accessories](#)

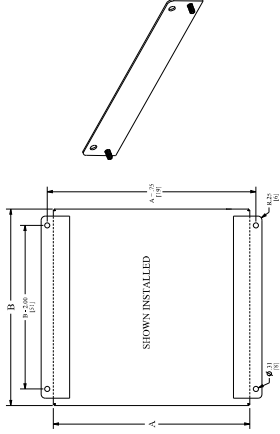
MOUNTING OPTIONS

Type 1 Mounting Straps

Designed to install on wall-mount Type 1 enclosures. Two mounting straps per kit. Made of heavy gauge carbon steel, powder coated ANSI-61 gray. Hardware is included to fasten mounting strap kit to the enclosure. For installation information, consult our Installation Manual at www.saginawcontrol.com.

Provided with UL Recognized sealing washer to maintain Environmental Rating of the enclosure.

Catalog No.	For Use With	Product Code	List Price
SCE-NMST6	6 Inch Wide NEMA 1 Enclosure	P2	15.98
SCE-NMST8	8 Inch Wide NEMA 1 Enclosure	P2	17.04
SCE-NMST10	10 Inch Wide NEMA 1 Enclosure	P2	18.10
SCE-NMST12	12 Inch Wide NEMA 1 Enclosure	P2	19.17
SCE-NMST16	16 Inch Wide NEMA 1 Enclosure	P2	21.30
SCE-NMST20	20 Inch Wide NEMA 1 Enclosure	P2	23.42
SCE-NMST24	24 Inch Wide NEMA 1 Enclosure	P2	25.56

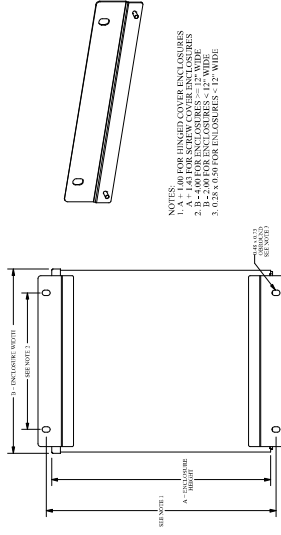


Type 3R Mounting Straps

Designed to install on wall-mount Type 3R enclosures. Two mounting straps per kit. Made of heavy gauge carbon steel, powder coated ANSI-61 gray. Hardware is included to fasten mounting strap kit to the enclosure. For installation information, consult our Installation Manual at www.saginawcontrol.com.

Provided with UL Recognized sealing washer to maintain Environmental Rating of the enclosure.

Catalog No.	For Use With	Product Code	List Price
SCE-MST4	4 Inch Wide 3R Enclosure	P2	17.04
SCE-MST6	6 Inch Wide 3R Enclosure	P2	18.10
SCE-MST8	8 Inch Wide 3R Enclosure	P2	19.17
SCE-MST10	10 Inch Wide 3R Enclosure	P2	20.24
SCE-MST12	12 Inch Wide 3R Enclosure	P2	21.30
SCE-MST16	16 Inch Wide 3R Enclosure	P2	23.42
SCE-MST20	20 Inch Wide 3R Enclosure	P2	25.56
SCE-MST24	24 Inch Wide 3R Enclosure	P2	27.69



Mounting Straps For Vented 3R Enclosures

Designed to install on wall-mount Vented 3R enclosures. Two mounting straps per kit. Made of heavy gauge carbon steel, powder coated white. Hardware is included to fasten mounting strap kit to the enclosure.

Provided with UL Recognized sealing washer to maintain Environmental Rating of the enclosure.

Catalog No.	For Use With	Product Code	List Price
SCE-VRMS24	24 Inch Wide Vented 3R Enclosure	P2	42.67
SCE-VRMS36	36 Inch Wide Vented 3R Enclosure	P2	53.21