

Stainless Steel Free-Standing Enclosures

Application -

Designed to house a variety of electrical and electronic controls and instruments. Provisions for optional surface mounting or rack mounting of almost any type of equipment. Provides protection from dust, dirt, water and oil. The enclosures are extra deep for applications requiring more interior space.

Construction -

- 0.104" stainless steel Type 304.
- Removable and interchangeable doors.
- Concealed hinge.
- Seams continuously welded and ground smooth.
- Strong, rigid construction with stiffeners welded on backs of single access boxes.
- Lifting eyes for easy handling.
- Black zinc die cast keylocking/padlocking handle.
- 3-point latching mechanism.
- Latch rods have rollers for easier door closing.
- Flange trough collar around all sides of door opening.
- Removable print pocket provided on door with 3-point latch.
- Mounting channels welded horizontally on sides of interior body at top, bottom and middle for mounting optional panels or rack mounting angles.
- Oil resistant gasket.
- Ground stud on door.

Finish -

Type 304 stainless steel with #4 brushed finish. Optional sub-panels are powder coated white.

Accessories - See pages 116-123



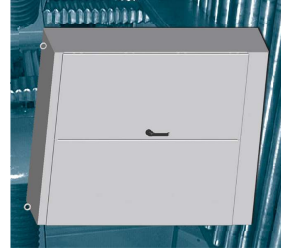
IS3 - Industry Standards -
 NEMA Type 3R, 12 & Type 13
 UL Listed Type 3R & 12
 CSA Type 3R & 12
 IEC 60529 IP 55

***Special instructions apply for IS3, IS4 and IS6 to maintain the environmental rating of Type 3R for these parts. See the Special Instructions on the Industry Standards page in the Technical Information Section.

STAINLESS STEEL FREE-STANDING TWO-DOOR SINGLE ACCESS ENCLOSURES

| Catalog No. | ENCLOSURE PRODUCT CODE S7 | | | | List Price |
|-----------------|---------------------------|-----------|-----------|-------------------|------------|
| | Height (A) | Width (B) | Depth (C) | Industry Standard | |
| SCE-604818SSFSD | 60.00 | 48.00 | 18.00 | IS3 | 7,477.15 |
| SCE-724818SSFSD | 72.00 | 48.00 | 18.00 | IS3 | 8,170.24 |
| SCE-724824SSFSD | 72.00 | 48.00 | 24.00 | IS3 | 8,851.10 |
| SCE-726018SSFSD | 72.00 | 60.00 | 18.00 | IS3 | 9,191.54 |
| SCE-726024SSFSD | 72.00 | 60.00 | 24.00 | IS3 | 9,944.57 |
| SCE-726036SSFSD | 72.00 | 60.00 | 36.00 | IS3 | 11,440.38 |
| SCE-727218SSFSD | 72.00 | 72.00 | 18.00 | IS3 | 10,212.82 |
| SCE-727224SSFSD | 72.00 | 72.00 | 24.00 | IS3 | 11,038.08 |
| SCE-904820SSFSD | 90.00 | 48.00 | 20.00 | IS3 | 9,562.88 |
| SCE-907220SSFSD | 90.00 | 72.00 | 20.00 | IS3 | 12,059.24 |
| SCE-907224SSFSD | 90.00 | 72.00 | 24.00 | IS3 | 12,688.02 |
| SCE-907236SSFSD | 90.00 | 72.00 | 36.00 | IS3 | 14,574.55 |

Available within 10 working days if not in stock



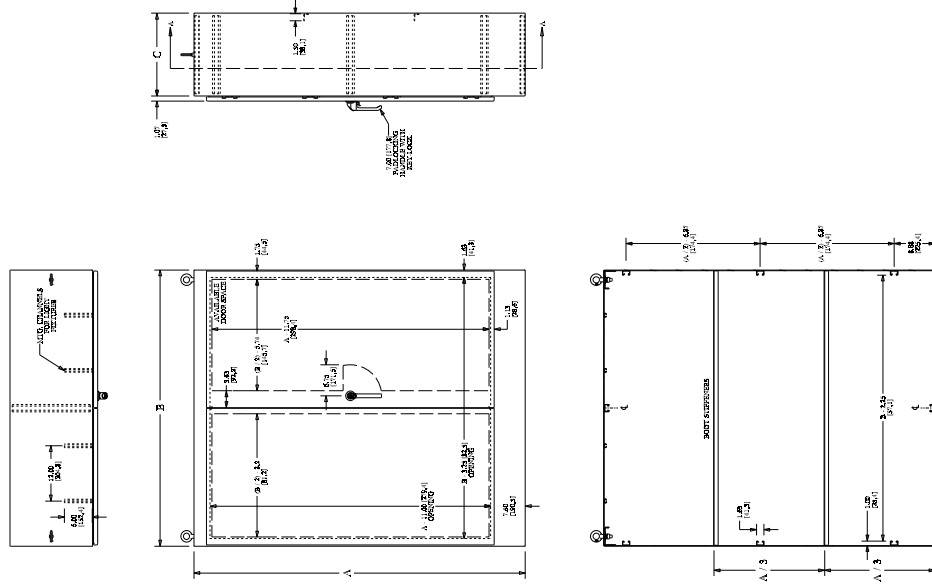
Phone (989) 799-6871
 Fax (989) 799-4524



Back to
 SS Free-Standing
 Enclosures

STAINLESS STEEL FREE-STANDING TWO-DOOR SINGLE ACCESS ENCLOSURES

TECHNICAL DATA



SECTION A-A

Phone (989) 799-6871
 Fax (989) 799-4524

