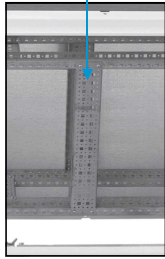


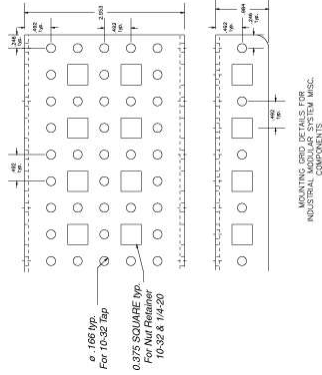
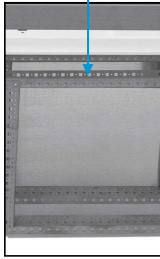
Horizontal Mounting Angle

Catalog No.	Width (B)	Ref. mm Width (B)	Quantity Per Kit	Product Code	List Price
SCE-HMG175	6.89	175	2	P5	19.27
SCE-HMG225	8.88	225	2	P5	20.90
SCE-HMG300	11.81	300	2	P5	23.19
SCE-HMG400	15.75	400	2	P5	26.45
SCE-HMG475	18.70	475	2	P5	28.75
SCE-HMG575	22.62	575	2	P5	32.75
SCE-HMG675	26.56	675	2	P5	35.93
SCE-HMG775	30.50	775	2	P5	38.97



Vertical Mounting Grid With Angle Mounting Brackets

Catalog No.	Height (A)	Ref. mm Height (A)	Used With Enclosure Ref. mm Height	Quantity Per Kit	Product Code	List Price
SCE-VMG18	66.93	1687.50	1800	2	P5	81.19
SCE-VMG20	74.80	1887.50	2000	2	P5	87.71



Back to
IMS Accessory
Guide

Phone (989) 799-6871
Fax (989) 799-4524



IMS (Industrial Modular System) ACCESSORIES

Horizontal Mounting Grid

Designed to provide a horizontal extension of the frame holes in the sides of a modular enclosure. Sold in sets of two with mounting hardware included. Made of galvanized material.

Grid Mounting Angle

Catalog No.	Parts Per Kit	Product Code	List Price
SCE-GMA	4	P5	20.23

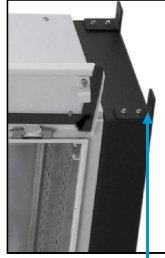


Grid Mounting Angle

Designed to provide flexible mounting of horizontal and vertical mounting grids. Made of galvanized material.

Floor Mounting Angles

Catalog No.	Parts Per Kit	Product Code	List Price
SCE-FMA	4	P5	36.00

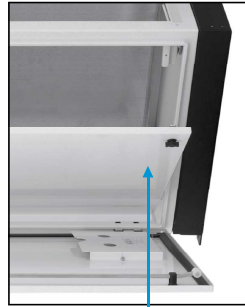


Floor Mounting Angles

Designed for use with IMS enclosures when the enclosure must be secured to the floor. Kit contains four floor mounting angles and mounting hardware. Powder coated Black Texture.

Dead Front/Swing Panel

Catalog No.	Height (A)	Ref. mm Height (A)	Width (B)	Ref. mm Width (B)	Used With Enclosure		Product Code	List Price
					Ref. mm Height	Ref. mm Width		
SCE-DF1806	65.88	1675.35	19.38	492.25	1800	600 & 1200	P5	306.83
SCE-DF1808	65.88	1675.35	27.25	682.15	1800	800 & 1600	P5	351.82
SCE-DF1809	65.88	1675.35	31.25	783.75	1800	1800	P5	373.63
SCE-DF1810	65.88	1675.35	35.13	882.30	1800	1000	P5	394.84
SCE-DF2006	73.75	1873.25	19.38	492.25	2000	600 & 1200	P5	322.38
SCE-DF2008	73.75	1873.25	27.25	682.15	2000	800 & 1600	P5	370.37
SCE-DF2009	73.75	1873.25	31.25	783.75	2000	1800	P5	394.69
SCE-DF2010	73.75	1873.25	35.13	882.30	2000	1000	P5	418.36



Dead Front/Swing Panel

Designed for installation into IMS enclosures, to be installed in the front of an enclosure and to swing out of the enclosure. Kit consists of heavy gauge brackets, hinges, and mounting hardware, installed by detaching door hinge from enclosure and installing swing out panel kit to the existing holes and hinge supplied with the enclosure. Made of heavy gauge steel and powder coated white.

Phone (989) 799-6871
Fax (989) 799-4524

