

## Modular Enclosures For Flange-Mounted Disconnects

### Application -

Can be bolted together in any desired multiple door arrangement for maximum versatility. Slave enclosures can be added or removed as required.

Designed to house most standard type disconnect. For installation information, consult our Installation Manual at [www.saginawcontrol.com](http://www.saginawcontrol.com).

### Construction -

- 0.125" carbon steel.
- Seams continuously welded and ground smooth.
- Body stiffeners for extra rigidity.
- Door and side openings are flanged to provide extra strength and smooth edges.
- Flange trough collar around all sides of door opening.
- Heavy duty lifting eyes anchor into reinforced top.
- Concealed hinge.
- Removable and interchangeable doors.
- Black zinc die cast coniroof/padlocking handle on main door of disconnect enclosures. Black zinc die cast padlocking handle on all other doors.
- 3-point latching mechanism.
- Ramp shoes on ends of latch rods for easier door closing.
- Panel supports.
- Large removable print pockets.
- Oil-resistant door gasket.
- Removable panels mount on collar studs.
- Mechanical interlock standard on each enclosure. Parts required to connect interlock system between adjacent enclosures are provided.
- Ground stud on door and body.

### Finish -

ANSI61 gray finish inside and out. Panels are powder coated white.

### ISI - Industry Standards -

NEMA Type 12 & Type 13  
UL Listed Type 12  
CSA Type 12  
IEC 60529 IP 55

### Note -

- Disconnect ordered separately.
- SCE-MODGK sold separately, required when bolting one enclosure to another.
- Part numbers ending with 'C' indicate a galvanized sub-panel installed.

## MODULAR ENCLOSURES

### SINGLE-DOOR DISCONNECT ENCLOSURE (LEFT SIDE OPEN)

Catalog No.	ENCLOSURE PRODUCT CODE A2			SUB-PANEL (P3)				
	Height (A)	Width (B)	Depth (C) Standard	List Price	Industry Price	Panel Height (D)	Panel Width (E)	List Price
SCE-MOD724018	72.00	40.00	18.00	1,693.58	SCE-64P37*	60.00	33.75	Included
SCE-MOD844018	84.00	40.00	18.00	1,883.48	SCE-76P37*	72.00	33.75	Included
SCE-MOD844024	84.00	40.00	24.00	2,054.27	SCE-76P37*	72.00	33.75	Included

### TWO-DOOR DISCONNECT ENCLOSURE (LEFT SIDE OPEN)

Catalog No.	ENCLOSURE PRODUCT CODE A2			SUB-PANEL (P3)				
	Height (A)	Width (B)	Depth (C) Standard	List Price	Industry Price	Panel Height (D)	Panel Width (E)	List Price
SCE-MOD724018	72.00	78.00	18.00	3,063.50	SCE-64P76*	60.00	72.00	Included
SCE-MOD844018	84.00	78.00	18.00	3,397.91	SCE-76P76*	72.00	72.00	Included
SCE-MOD844018G	84.00	78.00	18.00	3,509.74	SCE-76P76GALLY*	72.00	72.00	Included
SCE-MOD844024	84.00	78.00	24.00	3,629.61	SCE-76P76*	72.00	72.00	Included

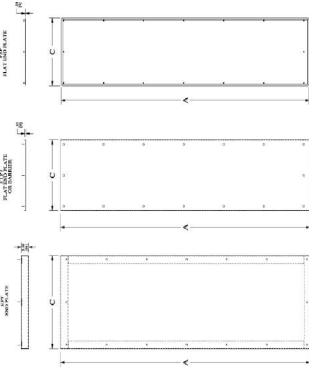
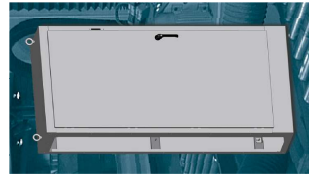
### SINGLE-DOOR SLAVE ENCLOSURE (BOTH SIDES OPEN)

Catalog No.	ENCLOSURE PRODUCT CODE A2			SUB-PANEL (P3)				
	Height (A)	Width (B)	Depth (C) Standard	List Price	Industry Price	Panel Height (D)	Panel Width (E)	List Price
SCE-MOD724018	72.00	40.00	18.00	1,672.08	SCE-64P37*	60.00	33.75	Included
SCE-MOD844018	84.00	40.00	18.00	1,869.60	SCE-76P37*	72.00	33.75	Included
SCE-MOD844018G	84.00	39.50	18.00	1,906.60	SCE-76P37GALLY*	72.00	33.75	Included
SCE-MOD844024	84.00	40.00	24.00	2,030.39	SCE-76P37*	72.00	33.75	Included

### TWO-DOOR SLAVE ENCLOSURE (BOTH SIDES OPEN)

Catalog No.	ENCLOSURE PRODUCT CODE A2			SUB-PANEL (P3)				
	Height (A)	Width (B)	Depth (C) Standard	List Price	Industry Price	Panel Height (D)	Panel Width (E)	List Price
SCE-MOD727118	72.00	77.00	18.00	3,042.00	SCE-64P76*	60.00	72.00	Included
SCE-MOD847718	84.00	77.00	18.00	3,374.03	SCE-76P76*	72.00	72.00	Included
SCE-MOD847718G	84.00	77.00	18.00	3,632.84	SCE-76P76GALLY*	72.00	72.00	Included
SCE-MOD847724	84.00	77.00	24.00	3,803.34	SCE-76P76*	72.00	72.00	Included

Part numbers ending in "G" have galvanized sub-panels installed.  
\*Sub-panel included with enclosure. Replacement panels can be ordered. Prices found in the accessory sections.



## MODULAR ENCLOSURE ACCESSORIES

### End Plates

Designed to provide a sealed cover for the open end of a modular enclosure. Provides additional wiring space along the side of the enclosure. Gasket and mounting hardware is included. Made of heavy gauge steel and powder coated ANSI-61 gray.

Catalog No.	Size	Enclosure Depth	Enclosure Height	Product Code	List Price
SCE-MOD72EPT	72.00 x 18.00 x 2.50	18.00	72.00	P2	326.59
SCE-MOD84EPT	84.00 x 18.00 x 2.50	18.00	84.00	P2	368.87
SCE-MOD842EPT	84.00 x 24.00 x 2.50	24.00	84.00	P2	391.16

### Barrier/Flat End Plates

Designed to serve as a barrier between two modular enclosure sections. Also can be used to provide a lower profile sealed cover for the open end of a modular enclosure. Mounting holes. Gasket and hardware is included. Made of heavy gauge steel and powder coated ANSI-61 gray.

Catalog No.	Size	Enclosure Depth	Enclosure Height	Product Code	List Price
SCE-MOD72FPT	72.00 x 18.25 x 0.375	18.00	72.00	P2	238.42
SCE-MOD84FPT	84.00 x 18.25 x 0.375	18.00	84.00	P2	262.02
SCE-MOD842FPT	84.00 x 24.25 x 0.375	24.00	84.00	P2	293.07

### Flat End Plates

Designed to provide a lower profile sealed cover with a finished appearance for the open end of a modular enclosure. Studded for easy installation. Gasket and mounting hardware is included. Made of heavy gauge steel and powder coated ANSI-61 gray.

Catalog No.	Size	Enclosure Depth	Enclosure Height	Product Code	List Price
SCE-MOD72FEP	71.50 x 17.50 x 1.00	18.00	72.00	P2	288.09
SCE-MOD84FEP	83.50 x 17.50 x 1.00	18.00	84.00	P2	311.69
SCE-MOD842FEP	83.50 x 23.50 x 1.00	24.00	84.00	P2	342.74

### Gasket and Bolt Kit

Designed to be used as an additional gasket or to replace gasket kits when changing modular enclosure configurations. Includes oil resistant gasket and zinc coated nuts and bolts. Required when bolting one enclosure to another.

Catalog No.	Enclosure Depth	Enclosure Height	Product Code	List Price
SCE-MODGK	18.00 & 24.00	72.00 & 84.00	P2	79.47

### Removable Wire Cover

Designed to cover the wires in the bottom of the enclosure. One wire cover required per door. Made of heavy gauge steel and powder coated white.

Catalog No.	Size	Enclosure Depth	Product Code	List Price
SCE-4RRMW	6.00 x 35.00 x 14.00	18.00	P2	198.89
SCE-20RRMW	6.00 x 35.00 x 20.00	24.00	P2	223.52

### Filler Plates

Designed to provide additional mounting surface between sub-panels or sections of a modular enclosure. Skitted mounting holes allow flexible installation. Made of heavy gauge carbon steel. Panels are powder coated white.

Catalog No.	Size	Enclosure Height	Product Code	List Price
SCE-72FP	60.00 x 9.38 x 0.125	72.00	P3	78.49
SCE-84FP	72.00 x 9.38 x 0.125	84.00	P3	88.62
SCE-96FP	78.00 x 9.38 x 0.125	90.00	P3	96.21

Back to Modular Enclosures