

### Free-Standing Enclosures

**Application -**  
Designed to house a variety of electrical and electronic controls and instruments. Provisions for optional surface mounting or rack mounting of almost any type of equipment. Provides protection from dust, dirt, water and oil. For outdoor application a drip shield and drain holes are required. The enclosures are extra deep for applications requiring more interior space. For installation information, consult our Installation Manual at [www.saginawcontrol.com](http://www.saginawcontrol.com).

- Construction -**
- 0.104" carbon steel.
  - Concealed hinge.
  - Removable and interchangeable doors.
  - Flange trough collar around all sides of door opening.
  - Seams continuously welded and ground smooth, no holes or knockouts.
  - Lifting eyes for easy handling.
  - Black zinc die cast keylocking/padlocking handle.
  - 3-point latching mechanism.
  - Latch rods have ramp shoes for easier door closing.
  - Removable print pocket provided on door.
  - Black quarter turn latches as required.
  - Mounting channels welded horizontally on sides of interior body at top, bottom and middle for mounting optional panels or rack mounting angles.
  - Oil resistant gasket.
  - Ground stud on door.

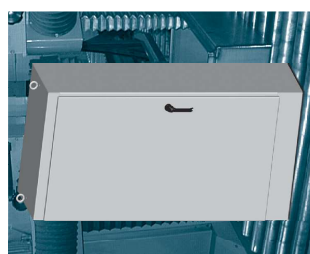
**Finish -**  
ANSI #61 gray powder coated inside and out. Optional sub-panels are powder coated white.

**Accessories - See pages 116-123**

**IS3 - Industry Standards -**  
NEMA Type 3R, 4, 12 & Type 13  
UL Listed Type 3R & 12  
CSA Type 3R & 12  
IEC 60529 IP55

**IS4 - Industry Standards -**  
NEMA Type 3R, 4, 12 & Type 13  
UL Listed Type 3R, 4 & 12  
CSA Type 3R, 4 & 12  
IEC 60529 IP66

\*\*\*Special instructions apply for IS3, IS4 and IS6 to maintain the environmental rating of Type 3R for these parts. See the Special Instructions on the Industry Standards page in the Technical Information Section.



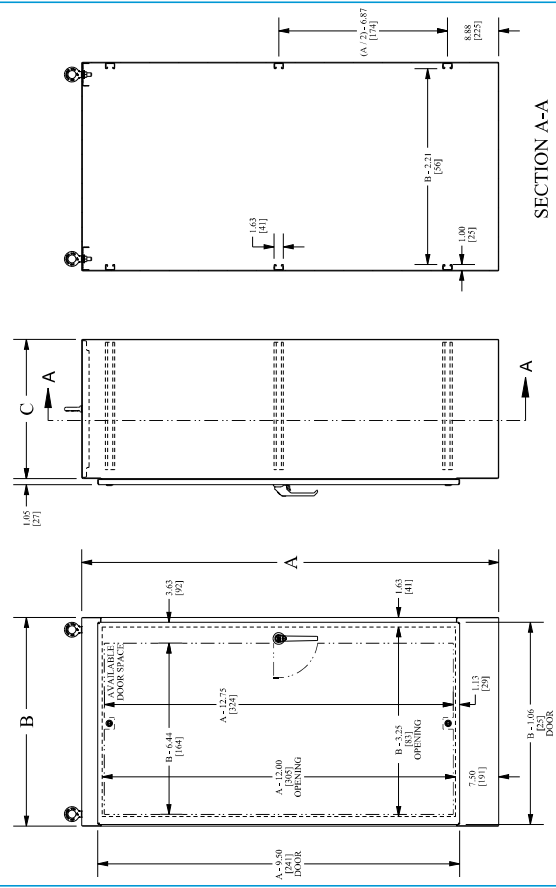
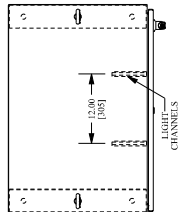
### FREE-STANDING SINGLE-DOOR SINGLE ACCESS ENCLOSURES

ENCLOSURE PRODUCT CODE A2				
Catalog No.	Height (A)	Width (B)	Depth (C)	Industry Standard
SCE-60EL2418FS	60.00	24.00	18.00	IS4
SCE-609624FS	60.00	36.00	24.00	IS3
SCE-72EL2418FS	72.00	24.00	18.00	IS4
SCE-72EL2424FS	72.00	24.00	24.00	IS4
SCE-72EL3018FS	72.00	30.00	18.00	IS4
SCE-72EL3024FS	72.00	30.00	24.00	IS4
SCE-72EL3618FS	72.00	36.00	18.00	IS3
SCE-72EL3624FS	72.00	36.00	24.00	IS3
SCE-729630FS	72.00	36.00	30.00	IS3
SCE-729636FS	72.00	36.00	36.00	IS3
SCE-90EL2420FS	90.00	24.00	20.00	IS4
SCE-909620FS	90.00	36.00	20.00	IS3
SCE-909624FS	90.00	36.00	24.00	IS3
SCE-909636FS	90.00	36.00	36.00	IS3

Part numbers that contain the letter "EL" that are over 30 inches wide have quarter turn latches on the center of the door top and bottom.

### FREE-STANDING SINGLE-DOOR SINGLE ACCESS ENCLOSURES

#### TECHNICAL DATA



Phone (989) 799-6871  
Fax (989) 799-4524



Phone (989) 799-6871  
Fax (989) 799-4524



Phone (989) 799-6871  
Fax (989) 799-4524