

Free-Standing Single-Door Single Access Enclosures

Application -
Designed to house a variety of electrical and electronic controls and instruments. Provisions for optional surface mounting or rack mounting of almost any type of equipment. Provides protection from dust, dirt, water and oil. For outdoor application a drip shield and drain holes are required. The enclosures are extra deep for applications requiring more interior space. For installation information, consult our Installation Manual at www.saginawcontrol.com.

Construction -

- 0.104" carbon steel.
- Concealed hinges.
- Removable and interchangeable doors.
- Flange trough collar around all sides of door opening.
- Seams continuously wetted and ground smooth, no holes or knockouts.
- Lifting eyes for easy handling.
- Black zinc die cast keylocking/padlocking handle.
- 3-point latching mechanism.
- Latch rods have ramp slots for easier door closing.
- Removable print pocket provided on door.
- Black quarter turn latches as required.
- Mounting channels welded horizontally on sides of interior body at top, bottom and middle for mounting optional panels or rack mounting angles.
- Hole plugs provided to seal holes in bottom of enclosure.
- Oil resistant gasket.
- Ground stud on door and body.
- Provisions for light kit.

Finish -
ANSI-61 gray powder coated inside and out. Optional sub-panels powder coated white.

Accessories - See pages 132 - 139

IS3 - Industry Standards -
NEMA Type 3R, 12 & Type 13
UL Listed Type 3R & 12
CSA Type 3R, 4 & 12
IEC 60529 IP55

IS4 - Industry Standards -
NEMA Type 3R, 4, 12 & Type 13
UL Listed Type 3R, 4 & 12
CSA Type 3R, 4 & 12
IEC 60529 IP66

**Special instructions apply for IS3, IS4 and IS6 for these parts. See the Special Instructions on the Industry Standards page in the technical Information Section.



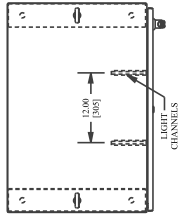
FREE-STANDING SINGLE-DOOR SINGLE ACCESS ENCLOSURES

Catalog No.	ENCLOSURE PRODUCT CODE A2			Industry Standard	List Price
	Height (A)	Width (B)	Depth (C)		
SCE-60EL2418FS	60.00	24.00	18.00	IS4	1,024.17
SCE-603624FS	60.00	36.00	24.00	IS3	1,366.97
SCE-72EL2418FS	72.00	24.00	18.00	IS4	1,135.10
SCE-72EL2424FS	72.00	24.00	24.00	IS4	1,261.50
SCE-72EL3018FS	72.00	30.00	18.00	IS4	1,251.20
SCE-72EL3024FS	72.00	30.00	24.00	IS4	1,387.63
SCE-723618FS	72.00	36.00	18.00	IS3	1,372.44
SCE-72EL3624FS	72.00	36.00	24.00	IS4	1,659.76
SCE-723624FS	72.00	36.00	24.00	IS3	1,514.33
SCE-723630FS	72.00	36.00	30.00	IS3	1,658.80
SCE-723636FS	72.00	36.00	36.00	IS3	1,800.69
SCE-90EL2420FS	90.00	24.00	20.00	IS4	1,351.80
SCE-903620FS	90.00	36.00	20.00	IS3	1,640.75
SCE-903624FS	90.00	36.00	24.00	IS3	1,754.25
SCE-903636FS	90.00	36.00	36.00	IS3	2,087.04

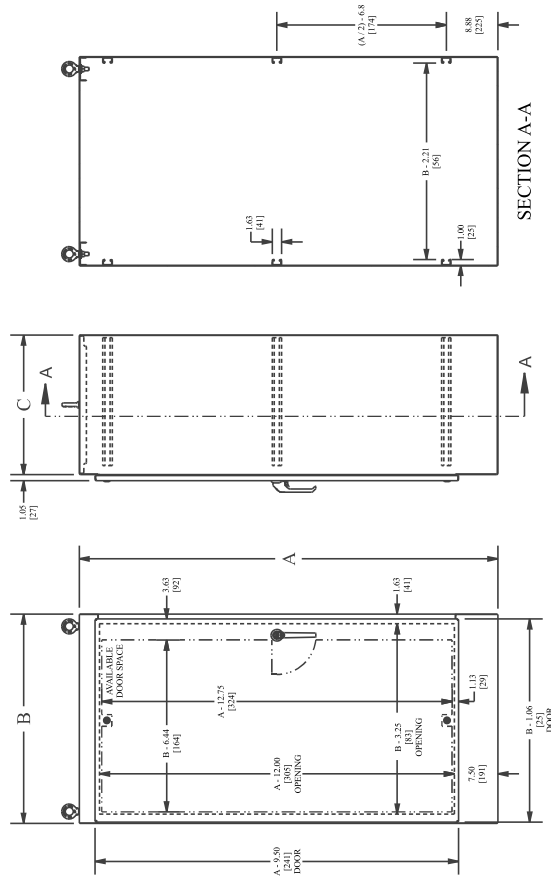
Part numbers that contain the letter "EL" with doors that are over 30 inches wide have quarter turn latches on the center of the door top and bottom.

FREE-STANDING SINGLE-DOOR SINGLE ACCESS ENCLOSURES

TECHNICAL DATA



LATCH NOTE:
"EL" part numbers with doors ≥ 30.00 [762] in width have additional latch centered top and bottom of door.



Phone (989) 799-6871
Fax (989) 799-4524



Phone (989) 799-6871
Fax (989) 799-4524

Back to
Free-Standing
Enclosures