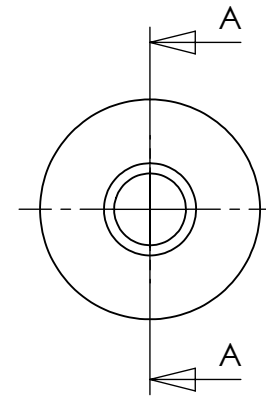
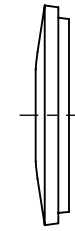


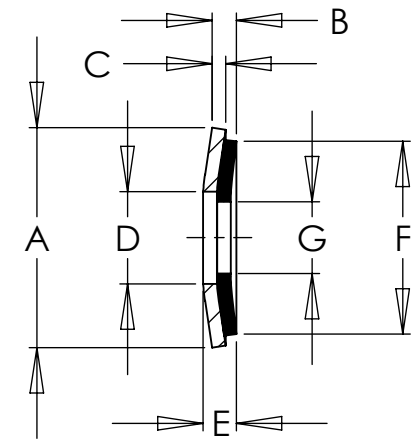
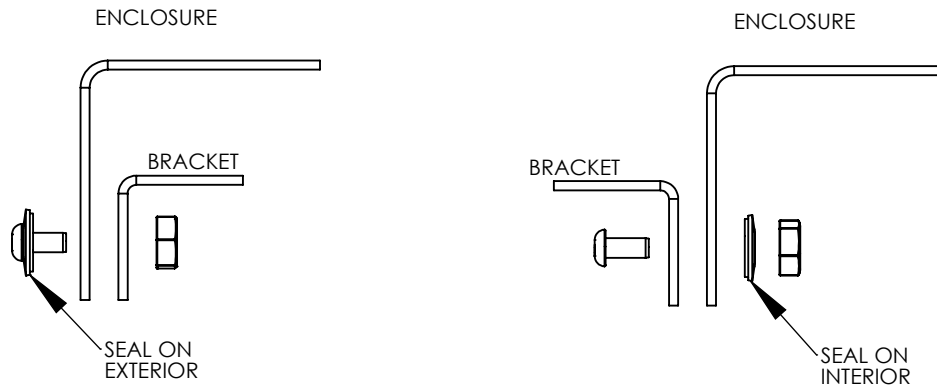
SEALING WASHERS
INTENDED FOR USE ON THE FLAT SURFACE OF
ENCLOSURES RATED TYPE 2, 3, 3R, 3S, 4, 4X AND 12



METAL SIDE



RUBBER SIDE



SECTION A-A

SAGINAW CONTROL & ENGINEERING

| Package Qty. | Purchase Part ID | Suitable to Seal Fastener Size | Material | A | B | C | D | E | F | G | Max Recommended Hole Size | Torque Range = (inch Lbs) | |
|--------------|------------------|--------------------------------|-----------|-------|-------|-------|-------|-------|-------|-------|---------------------------|---------------------------|-----|
| | | | | Ref | Ref | Ref | Ref | Ref | Ref | Ref | | Min | Max |
| 50 | 115096 | SCE-BSW38SS | Stainless | 0.725 | 0.090 | 0.036 | 0.425 | 0.120 | 0.685 | 0.325 | 0.440 | 75 | 150 |
| 50 | 115097 | SCE-BSW31SS | Stainless | 0.625 | 0.090 | 0.036 | 0.330 | 0.110 | 0.575 | 0.275 | 0.344 | 25 | 100 |
| 50 | 115098 | SCE-BSW25SS | Stainless | 0.496 | 0.090 | 0.036 | 0.260 | 0.103 | 0.450 | 0.180 | 0.281 | 25 | 75 |
| 50 | 115099 | SCE-BSW19SS | Stainless | 0.496 | 0.090 | 0.036 | 0.260 | 0.103 | 0.450 | 0.170 | 0.250 | 25 | 75 |

**SEALING WASHER
ASSEMBLY DRAWING**

| | | |
|------|----------------------|--------------|
| SIZE | DWG. NO. | REV. |
| A | SealingWasher.SLDDRW | |
| | | SHEET 1 OF 1 |