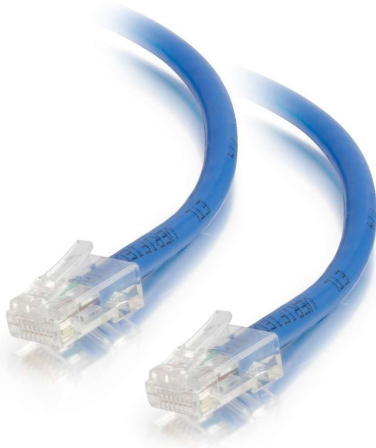




C2G

**1ft (0.3m) Cat5e Non-Booted Unshielded (UTP) Ethernet Network Patch Cable - Blue**

Part No. CG-25462



For fast Ethernet networks that require bandwidth-intensive voice, data, or video distribution applications. Meets all Cat5e TIA/EIA standards, and drastically reduces both impedance and structural return loss (SRL). Each of the individual pairs is bonded together to help maintain the twist-spacing throughout the line right up to the termination point. Constructed from high quality copper cable, this design minimizes Near-End Crosstalk (NEXT) levels. Available in a variety of colors to easily color-code your network installation.

## Features & Benefits

Designed for network adapters, hubs, switches, routers and more

Available in 10 colors to color-code a network

CMG In-Wall Rated Jacket

Constructed with unshielded twisted pair wires

Available in lengths up to 150ft

## Specifications

### General Info

Product Line	C2G	Color	Blue
UPC Number	757120254621	Country Of Origin	Vietnam
Application Sector	Residential, Commercial, Industrial	Warranty Type	Lifetime
Type	Cable		

### Dimensions

Cable Length	1 ft
--------------	------

### Additional Information

Prop 65 Warning Required	Yes	Prop 65 Warning Language	Cancer and Reproductive Harm
--------------------------	-----	--------------------------	------------------------------

### Technical Information

---

Jacket Material	PVC (Polyvinyl Chloride)	Wire Gauge	24 AWG
Cable Type	Ethernet Patch Cable, Unbooted, Unshielded (UTP)	Jacket Rating	Standard / Non-Rated
Adapter Rear	RJ-45 Male	Adapter Front	RJ-45 Male

---