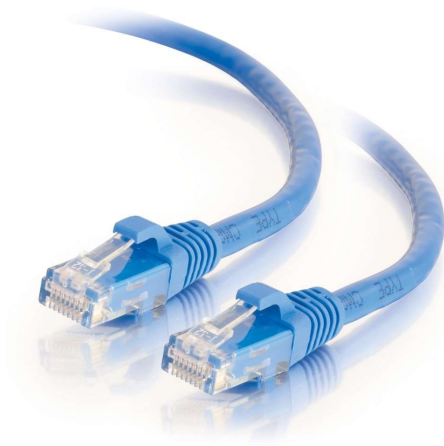




C2G
6ft (1.8m) Cat6 Snagless Unshielded (UTP) Ethernet Network Patch Cable - Blue
Part No. CG-03975



For fast Ethernet and Gigabit computer networks that require bandwidth-intensive voice, data, or video distribution applications. Meets all Cat6 TIA/EIA standards, and drastically reduces both impedance and structural return loss (SRL). Each of the individual pairs is bonded together to help maintain the twist-spacing throughout the line right up to the termination point. Constructed from high quality copper cable, this design minimizes Near-End Crosstalk (NEXT) levels. The molded, snagless boot prevents unwanted cable snags during installation and provides extra strain relief. Available in a variety of colors to easily color-code your network installation.

Features & Benefits

- Snagless design protects clips when plugging and unplugging
- Standard RJ45 connectors and unshielded twisted pair wires
- Available in 10 colors to color-code a network
- Available in lengths up to 150ft

Specifications

General Info

| | | | |
|---------------|---------------------------|--------------------|---|
| Product Line | C2G | Color | Blue |
| UPC Number | 757120039754 | Country Of Origin | Vietnam |
| Features | PoE (Power Over Ethernet) | Application Sector | Residential, Commercial, Industrial |
| Warranty Type | Lifetime | Type | Cable |

Dimensions

| | |
|--------------|------|
| Cable Length | 6 ft |
|--------------|------|

Additional Information

| | | | |
|--------------------------|-----|--------------------------|---------------------------------|
| Prop 65 Warning Required | Yes | Prop 65 Warning Language | Cancer and Reproductive Harm |
|--------------------------|-----|--------------------------|---------------------------------|

Technical Information

| | | | |
|-----------------|--|---------------|----------------------|
| Jacket Material | PVC (Polyvinyl Chloride) | Wire Gauge | 24 AWG |
| Cable Type | Ethernet Patch Cable, Booted, Snagless, Unshielded (UTP) | Jacket Rating | Standard / Non-Rated |
| Adapter Rear | RJ-45 Male | Adapter Front | RJ-45 Male |
